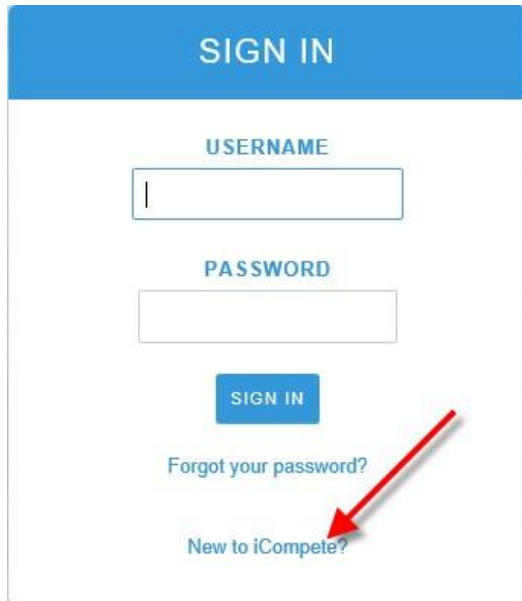


Creating a new iCompete account

1. Go to <https://aqha.icompete.net/> and click on the new to iCompete option.



SIGN IN

USERNAME

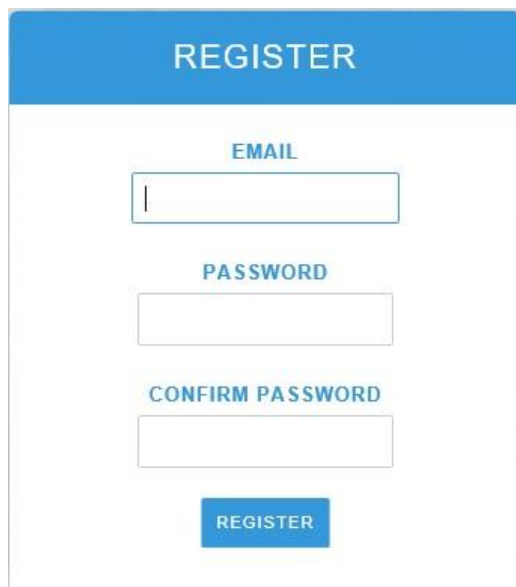
PASSWORD

SIGN IN

[Forgot your password?](#)

[New to iCompete?](#)

2. Enter in an email address and password for the account. You will need to use at least one number in the password field. Then press register.



REGISTER

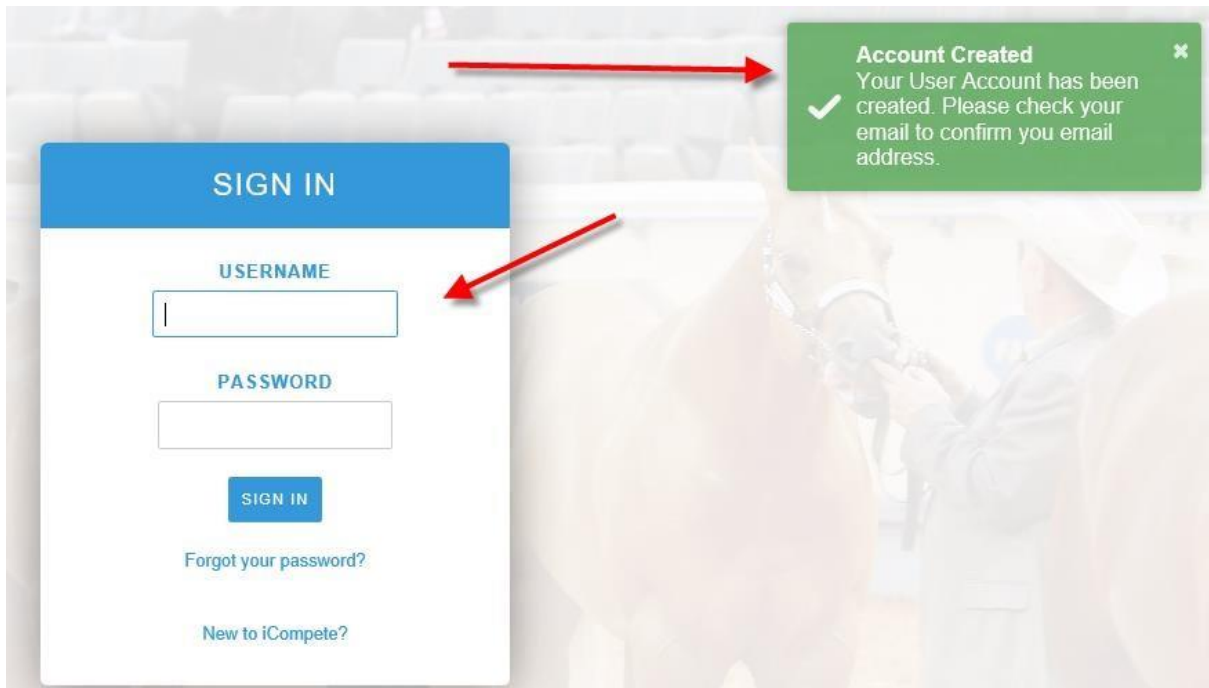
EMAIL

PASSWORD

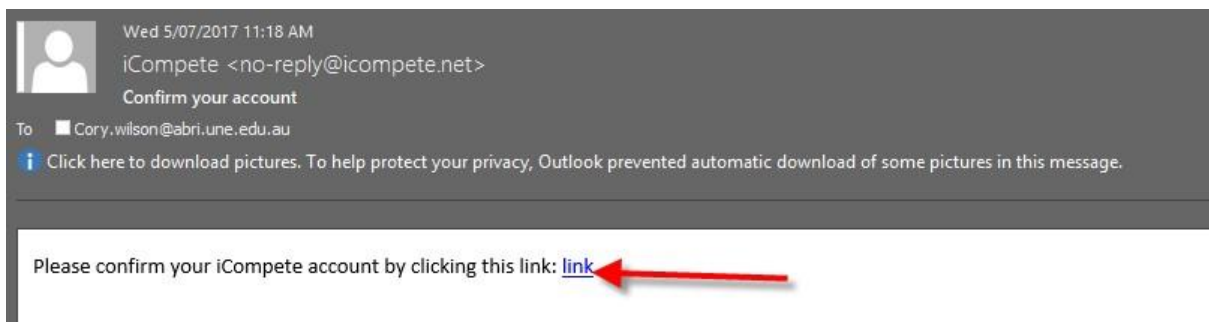
CONFIRM PASSWORD

REGISTER

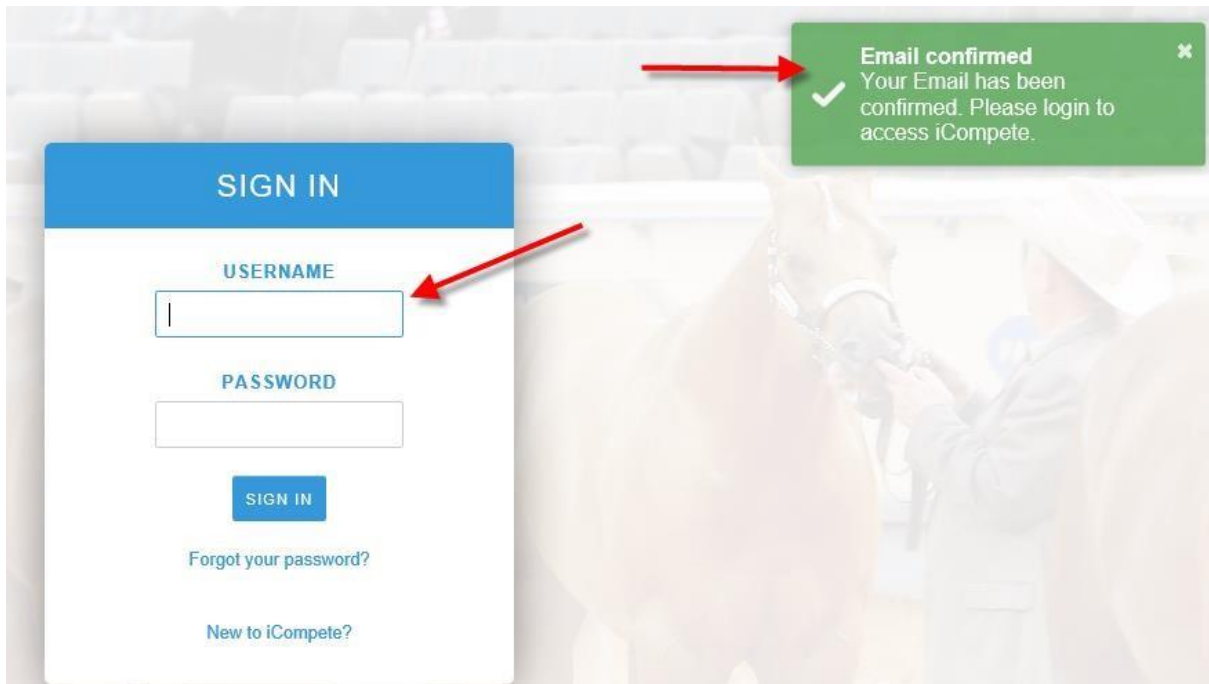
3. You will then be taken back to the login screen where you will get a message about having to confirm the email address entered.



4. Below is the email you will receive to confirm the account. Click on the link option to confirm the account.



5. Once the email is confirmed you will be taken to the login screen with a message saying the email is confirmed. You will then be able to login.



6. When you login you will need to associate the login to a members account. To do this you will be asked to enter the member Ident you wish to associate this login with. Enter the member ID and press associate.
7. Once you have entered a members ID you will be asked to verify some details for that account. Enter the details and press validate.

More information is required to associate your NCHA membership. Please enter the additional information below and click Verify.

Please note that the information you have on file with NCHA may not be current. The information you enter is to verify your identity not as your actual/current contact info.

Email	<input type="text"/>	←
Phone	<input type="text"/>	
PostCode	<input type="text"/>	
	<input type="button" value="✓ Validate"/>	←

8. Once the validation has been done you will be taken to the main screen where you can view your existing horses and update/maintain your Membership details in the AQHA database.

Australian Quarter Horse Association

Please select an option below



My Membership



My Animals

If you have any questions about how any of this please feel free to contact the AQHA office on 0267626444